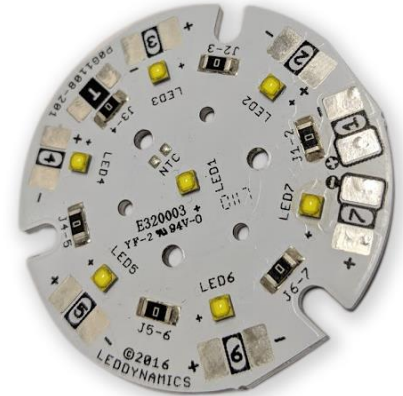


Product Overview

The POG1108 is a compact high lumen output light module. It employs high power Luxeon C LEDs for a large punch in a small space. Compatible with Khatod's Zeta optics.

Features & Benefits

- Seven Luxeon C LEDs providing
- Electrically isolated MCPCB
- Highly configurable.
- Optional thermistor available
- Over 100 Lumens per Watt!



Electrical Specifications

Specification	Min	Typical	Max	Unit
Forward Voltage	17.5	19.25	24.5	VDC
Forward Current		350	1225	mA
Operating Temperature (T _j)	-40		135	°C
Luminous Flux (@350mA)	700	791	850	Lm

Mechanical

Specification	Imperial	Metric
Radius	1.57"	40 mm
Height (without optic)	0.118"	3 mm
Height (with optic)	0.532"	13.52mm
Weight	0.075oz	5.3g

Available Optics

POG1108 is compatible with Khatod's Zeta optic line. More information is provided at Khatod's website for product number - PL121106. Contact us for optics outside of the PL121106 "Narrow" beam pattern.

Heat Concerns

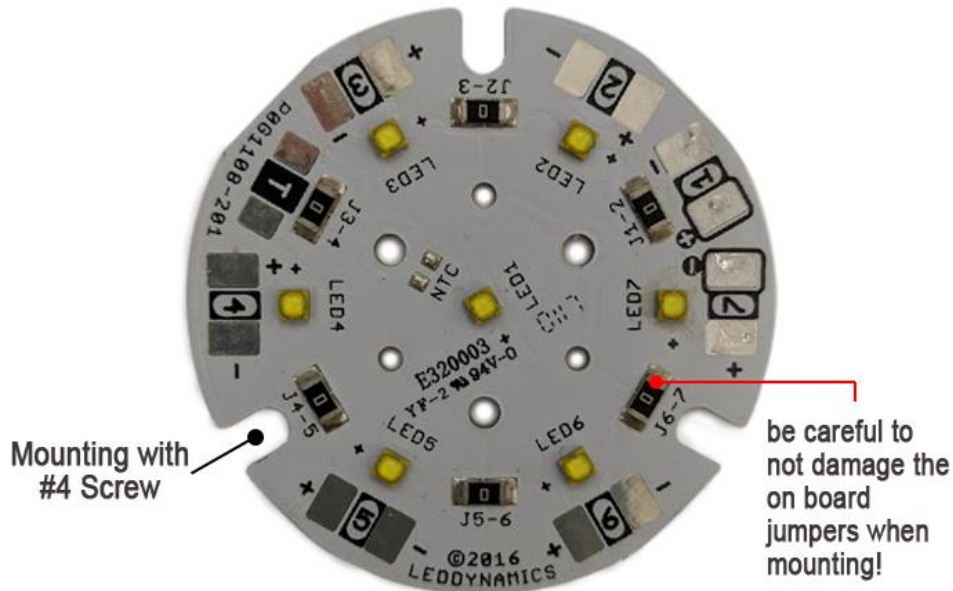
Thermal management should always be a consideration in any LED application. The POG1108 implements seven high power LEDs that require heatsinking. The back of the PCB is electrically isolated so it is not necessary to use an electrically insulated thermal interface material. Some form of thermal interface material should be used to minimize air pockets and allow for maximum heat transfer from the MCPCB to the heatsink.



P0G1108 - Seven-up Luxeon C LED Module

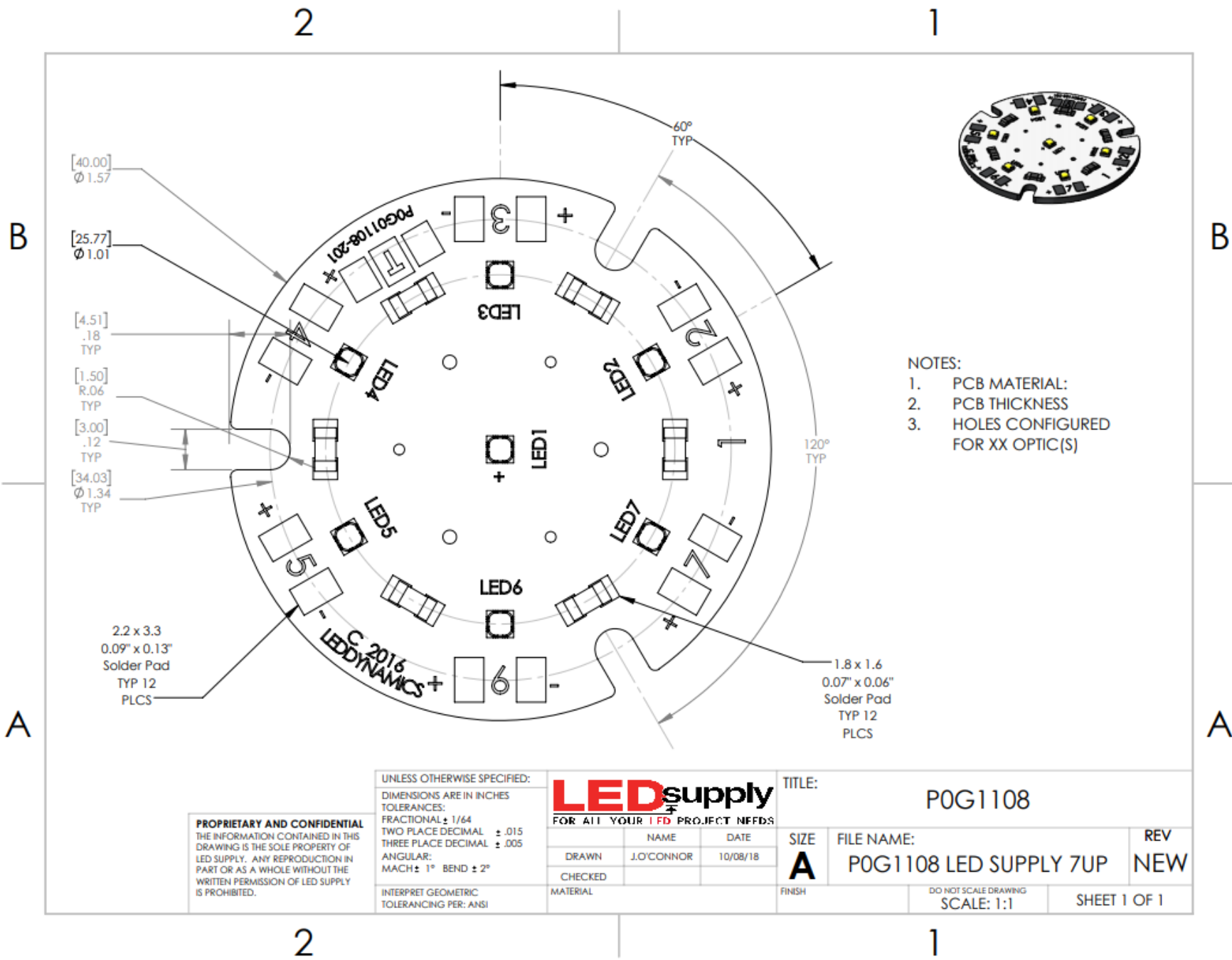
Mounting

Mounting points are provided at three locations on the P0G1108. A #4 screw should be used when using the mounting point. Make certain that you will not damage the resistors near the mounting point as this will affect the function of the module.



Customizing

The P0G1108 is customizable to allow for each LED or multiple LEDs to be addressed. Removal of the jumpers (J1-7) allows for each LED to have its own anode and cathode pad for powering the individual LEDs.



- NOTES:
1. PCB MATERIAL:
 2. PCB THICKNESS
 3. HOLES CONFIGURED FOR XX OPTIC(S)

PROPRIETARY AND CONFIDENTIAL
 THE INFORMATION CONTAINED IN THIS DRAWING IS THE SOLE PROPERTY OF LED SUPPLY. ANY REPRODUCTION IN PART OR AS A WHOLE WITHOUT THE WRITTEN PERMISSION OF LED SUPPLY IS PROHIBITED.

UNLESS OTHERWISE SPECIFIED:
 DIMENSIONS ARE IN INCHES
 TOLERANCES:
 FRACTIONAL ± 1/64
 TWO PLACE DECIMAL ± .015
 THREE PLACE DECIMAL ± .005
 ANGULAR:
 MACH ± 1° BEND ± 2°
 INTERPRET GEOMETRIC TOLERANCING PER: ANSI

LEDsupply
 FOR ALL YOUR I/FD PROJECT NEEDS

NAME	DATE
DRAWN J.O'CONNOR	10/08/18
CHECKED	
MATERIAL	

TITLE: POG1108		REV
SIZE A	FILE NAME: POG1108 LED SUPPLY 7UP	NEW
FINISH	DO NOT SCALE DRAWING SCALE: 1:1	SHEET 1 OF 1