

MAGNUM 8

8" LED DOWNLIGHT

TRUE REMODEL • RETROFIT • NEW CONSTRUCTION

AMERICAN LIGHTING EXCLUSIVE

An industry first LED Downlight

FEATURES

- 110V-277V, 60Hz AC
- 23W, CRI-84 High performance LED Downlight
- CCT - 3000K Warm White, 4000K Bright White
- IC-Rated (direct contact with insulation)
- Suitable for damp locations
- Available in Brushed Steel or White Finishes

EASY TO INSTALL

- No recessed housing or rough-in kit required
- Spacious, integrated junction box
- Durable spring loaded mounting clips
- Earthquake anchoring cable included
- Cut out template included

ZONAL LUMEN SUMMARY



90° Zone = 2000 lumens

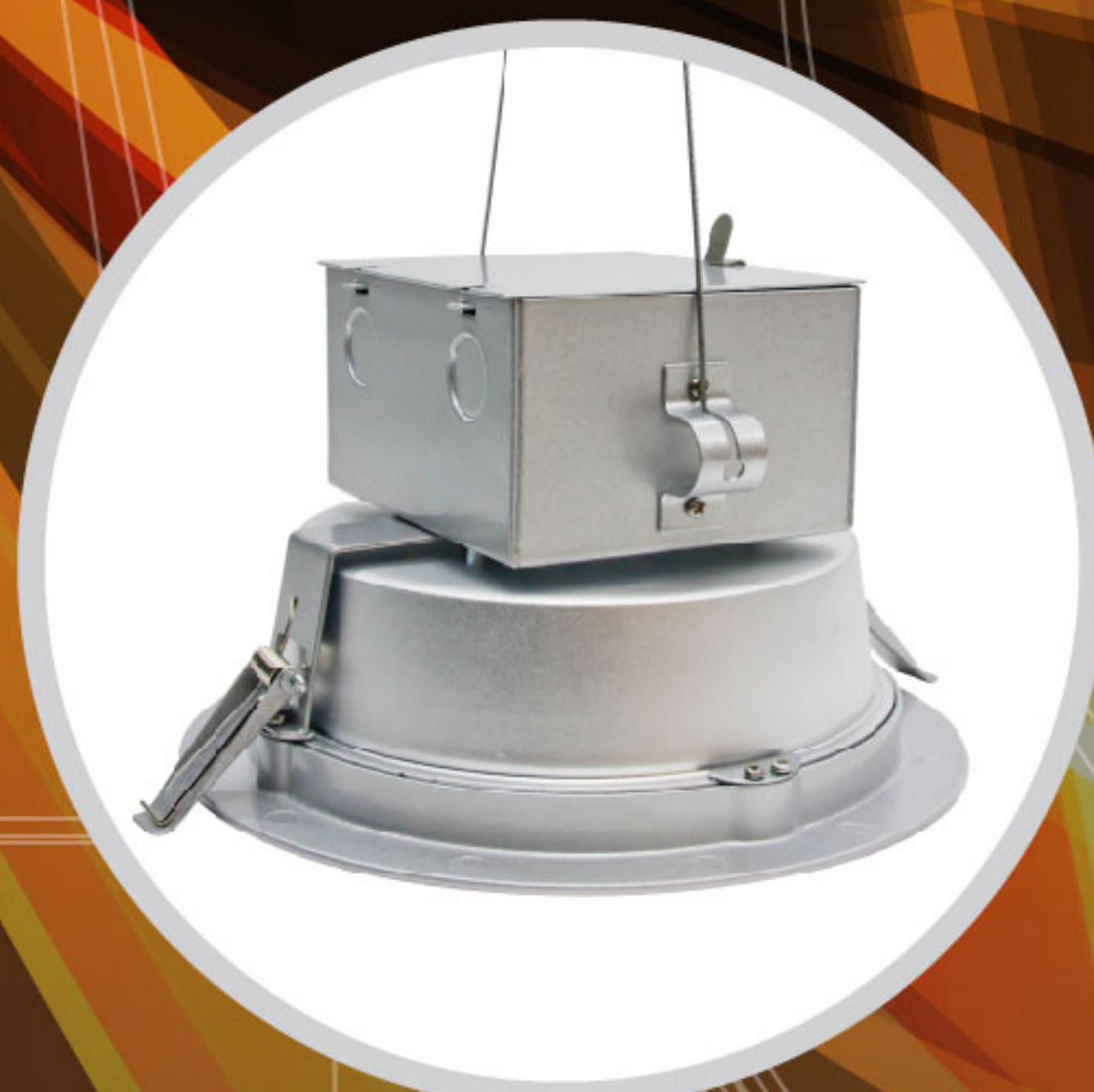
60° Zone = 1740 lumens

*LUMENS BASED ON 4000K FIXTURE

SPRING LOADED MOUNTING CLIPS



MULTIPLE SECURING OPTIONS



EARTHQUAKE CABLE (INCLUDED)



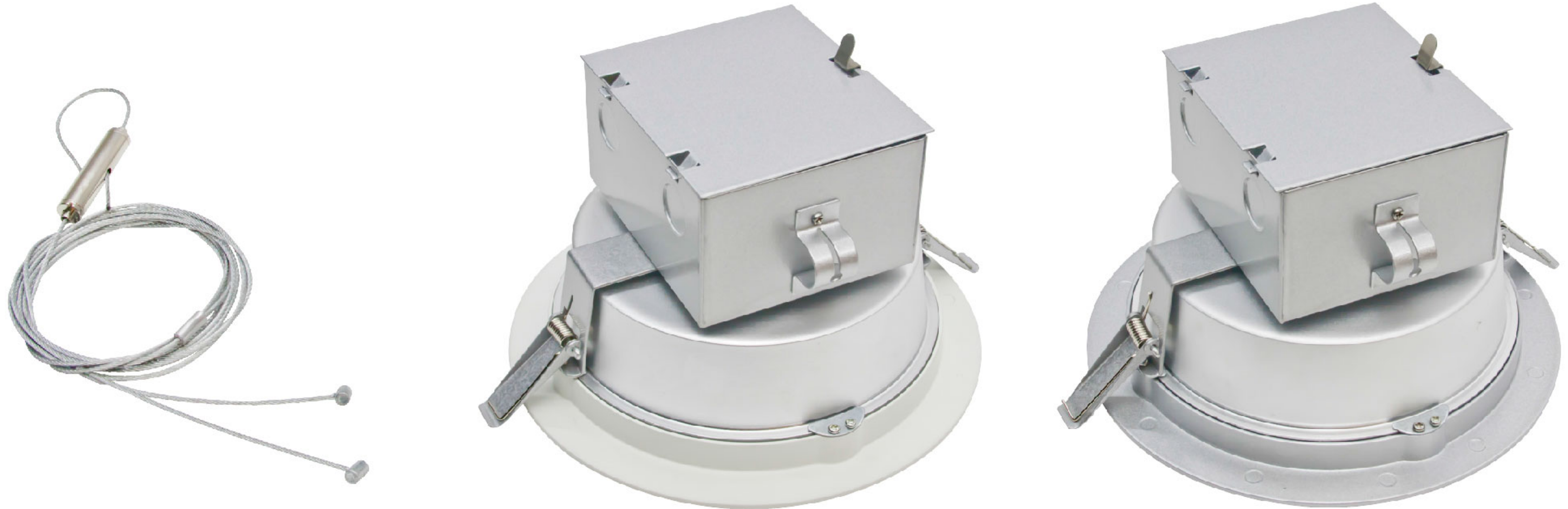
AMERICAN LIGHTING
BRIGHT IDEAS • INNOVATIVE PRODUCTS

ORDERING INFORMATION

8" LED DOWNLIGHT

LS-	-	-
MAG8	30 = 3000K 40 = 4000K	WH = White BS = Brushed Steel

Earthquake cable (INCLUDED)



TECHNICAL SPECIFICATIONS

Voltage	100V-277V, 60 Hz AC
Construction	SMD LEDs and integrated driver with aluminum back heat sink with integrated junction box
IC-Rated	Yes
Mounting	Recessed only
Dimensions	5.38" x 9.05"
Cut-out	7.75" hole size
Light Output	MAG8-30-WH = 1850 lumens, MAG8-40-WH = 2000 lumens
CRI	84
Wattage	23 watts
LED specs	2835 SMD 3000K, 2835 SMD 4000K
Dimmers	Non-dimmable
Diffuser	Frosted polycarbonate lens
Packaging	Retail box, 12 per case
