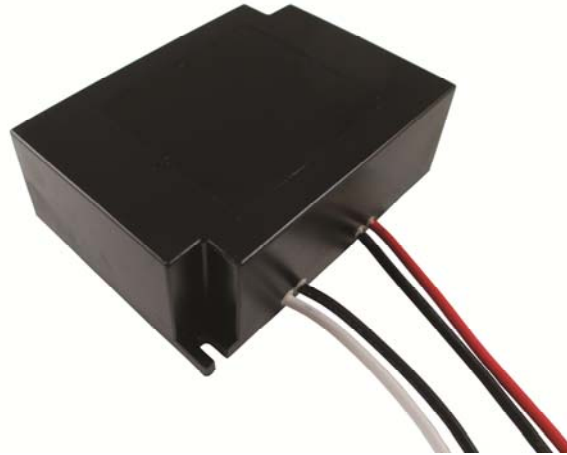




**40W Constant Current LED Driver
PDA041B Waterproof LED Driver Non-Dimming**



Features

- Class 2 per UL1310
- OVP, OCP, Over-Load and Short-Circuit Protection
- >0.9 Power Factor Correction
- 5 Year Warranty
- IP67 Rating - waterproof
- THD <20%
- UL 8750 Compliant
- Brownout/Brownout Recovery

Applications

- Down lights
- Area Lights
- Architectural lighting

Safety Approvals

- cUL/UL

Mechanical Characteristics

- Length: 95mm (3.74in)
- Width: 71mm (2.79in)
- Height: 32mm (1.26in)
- Weight: N/A

Output Specifications

Model	DC Output Voltage			Output Current	Output Power
	Min.	Typ.	Max.		
PDA041B-700B	39V	-	54V	700mA	38W
PDA041B-1A0B	28V	-	38V	1050mA	40W
PDA041B-1A4B	18V	-	26V	1400mA	37W

Phihong is not responsible for any error, and reserves the right to make changes without notice. Please visit our website at www.phihong.com for the most up-to-date specifications and contact information.

INPUT:

AC Input Voltage Rating
120VAC to 277VAC

AC Input Frequency
47~63Hz

Maximum Input Current
≤ 0.8A

Leakage Current
0.5mA maximum

Power Factor
≥ 0.9

THD
Less than 20%

OUTPUT:
Output Current Ripple
<40%

Efficiency

Model	Typical Efficiency
PDA041B-700B	89%
PDA041B-1A0B	88.5%
PDA041B-1A4B	88%

Environmental:

Temperature

Operation case -40 to +62°C
Non-operation -40 to +80°C
Operating Humidity 20 to 95%

*Output derates from 50°C to 62°C

EMC

FCC 47 Part 18 Class B

Immunity

IEC61000-4-2
IEC61000-4-4
IEC61000-4-5
IEC61000-4-11

Dielectric Withstand (Hi-pot) Test

Primary to secondary: 3000VAC for 1 minute, 10mA

Insulation Resistance

Primary to secondary: >10M Ohm 500VDC, 1 Minute

Features

Short-Circuit Protection

The PSU will withstand a short circuit across the outputs without damage

Input Over Current Protection

The input power line will be fused with a 2A/300V fuse

Output Over-voltage Protection

Auto shutdown

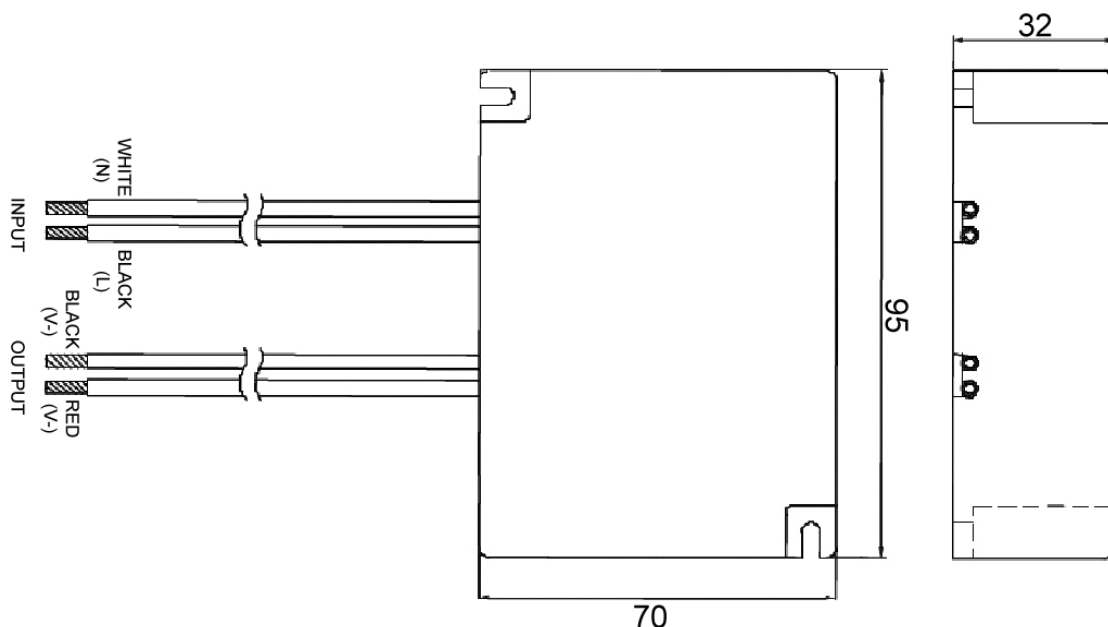
Input / Output Connections

Position	Terminal Color	Specification
Input	Black	AWG16 Solid Wire
	White	AWG16 Solid Wire
Output	Red	AWG18 Solid Wire
	Black	AWG18 Solid Wire

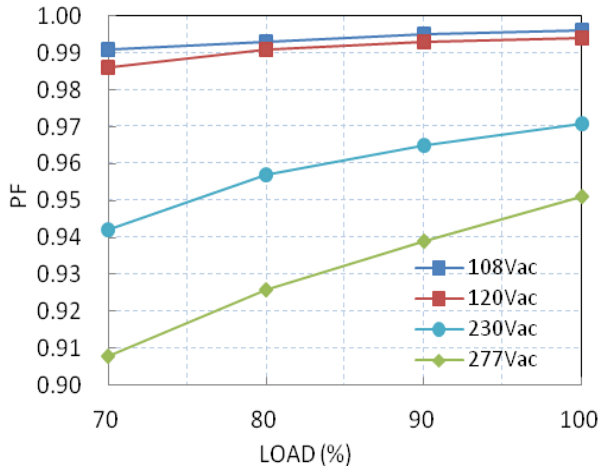
Warranty

5 Years

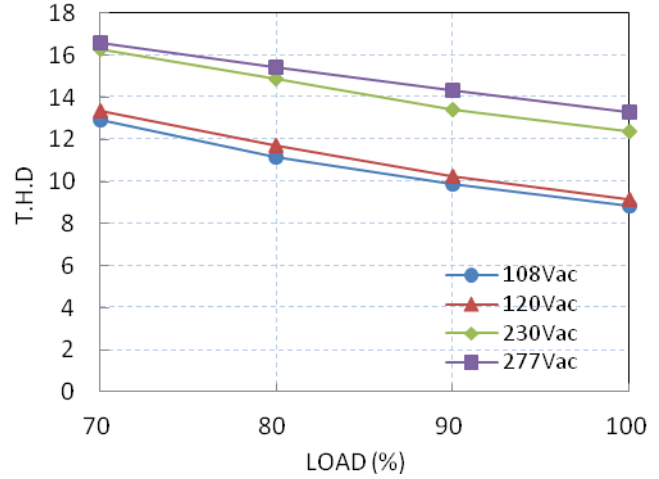
Dimension Diagram unit: mm



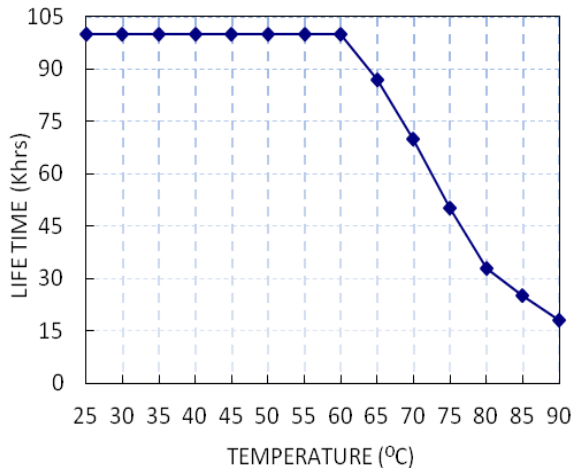
Power Factor vs. Load



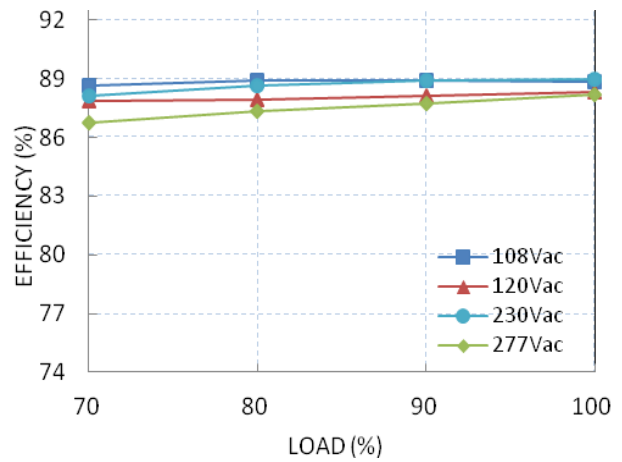
Total Harmonic Distortion vs. Load



Lifetime vs. Tc

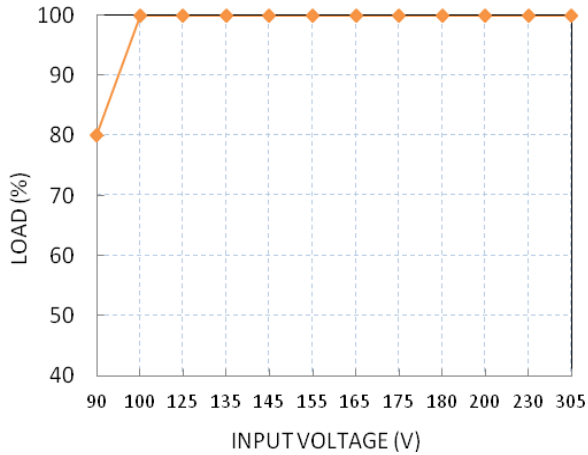


Efficiency vs Load (PDA041B-700B)



Temperature Rating

Static Characteristic: Load vs. Input Voltage



Derating Curve: Load vs Ta

